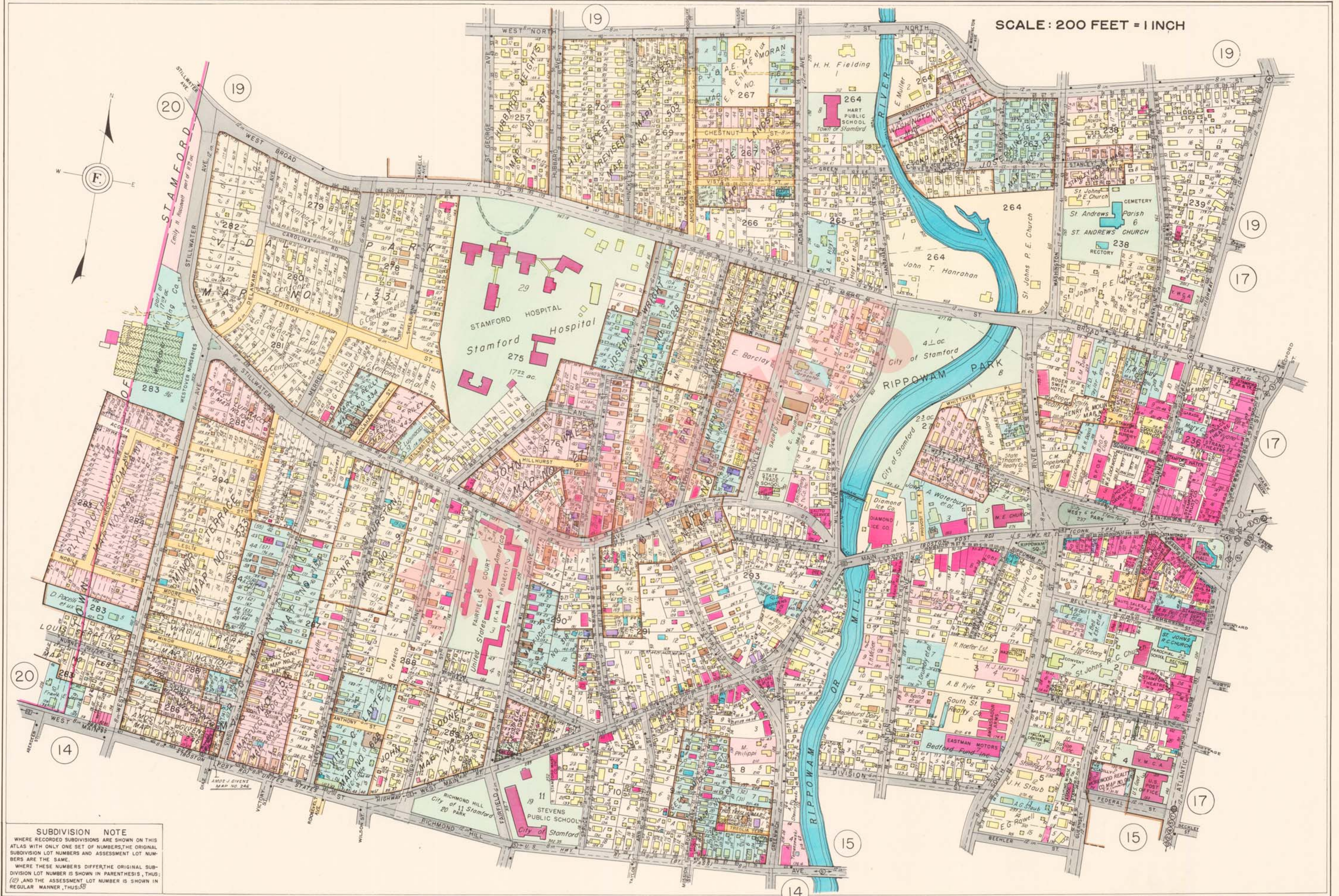


SCALE: 200 FEET = 1 INCH



**SUBDIVISION NOTE**  
 WHERE RECORDED SUBDIVISIONS ARE SHOWN ON THIS ATLAS WITH ONLY ONE SET OF NUMBERS, THE ORIGINAL SUBDIVISION LOT NUMBERS AND ASSESSMENT LOT NUMBERS ARE THE SAME.  
 WHERE THESE NUMBERS DIFFER, THE ORIGINAL SUBDIVISION LOT NUMBER IS SHOWN IN PARENTHESIS, THUS: (12) AND THE ASSESSMENT LOT NUMBER IS SHOWN IN REGULAR MANNER, THUS: 50