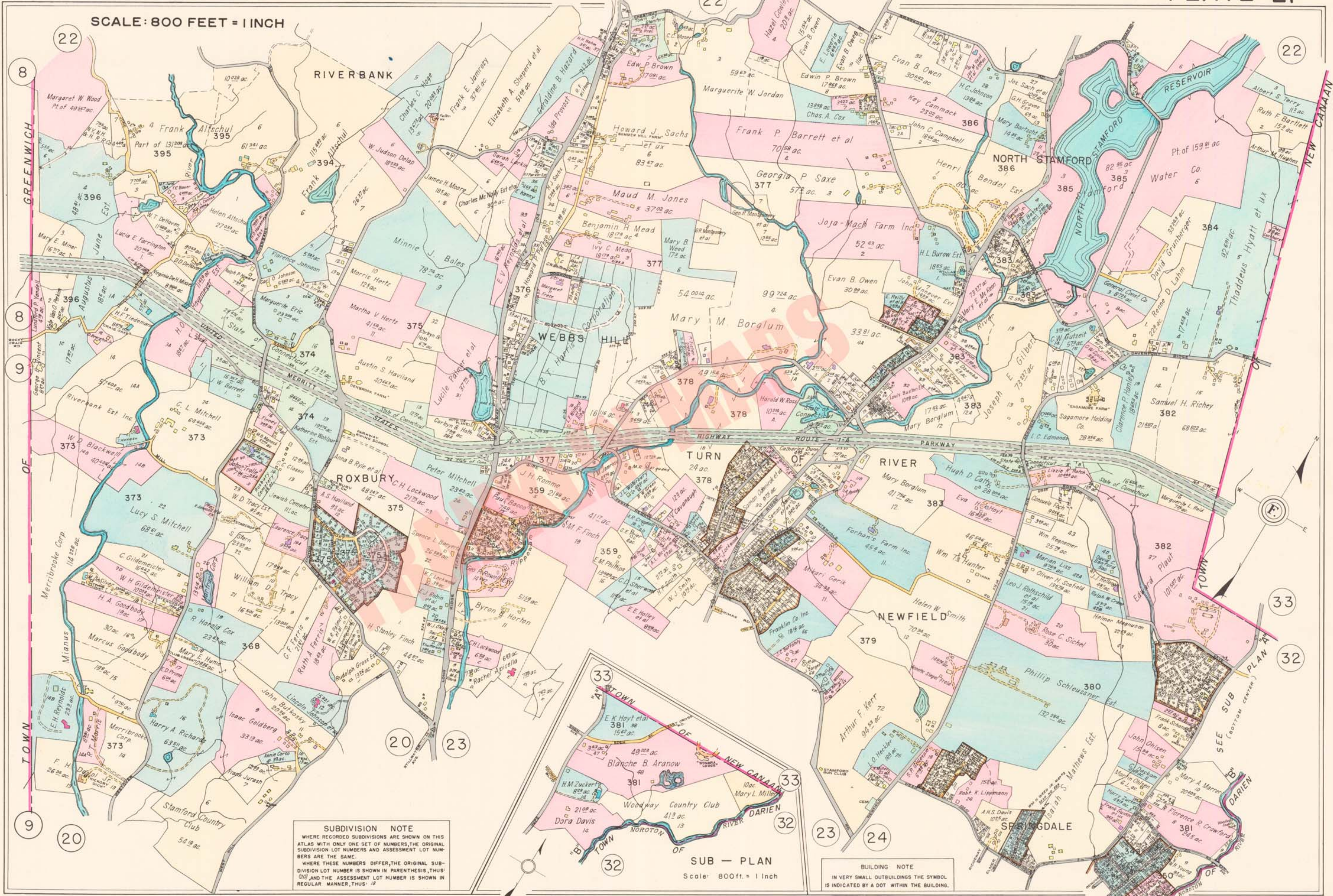


SCALE: 800 FEET = 1 INCH



SUBDIVISION NOTE
 WHERE RECORDED SUBDIVISIONS ARE SHOWN ON THIS ATLAS WITH ONLY ONE SET OF NUMBERS, THE ORIGINAL SUBDIVISION LOT NUMBERS AND ASSESSMENT LOT NUMBERS ARE THE SAME.
 WHERE THESE NUMBERS DIFFER, THE ORIGINAL SUBDIVISION LOT NUMBER IS SHOWN IN PARENTHESES, THUS: (20) AND THE ASSESSMENT LOT NUMBER IS SHOWN IN REGULAR MANNER, THUS: 12

BUILDING NOTE
 IN VERY SMALL OUTBUILDINGS THE SYMBOL IS INDICATED BY A DOT WITHIN THE BUILDING.

SUB - PLAN
 Scale: 800ft. = 1 Inch