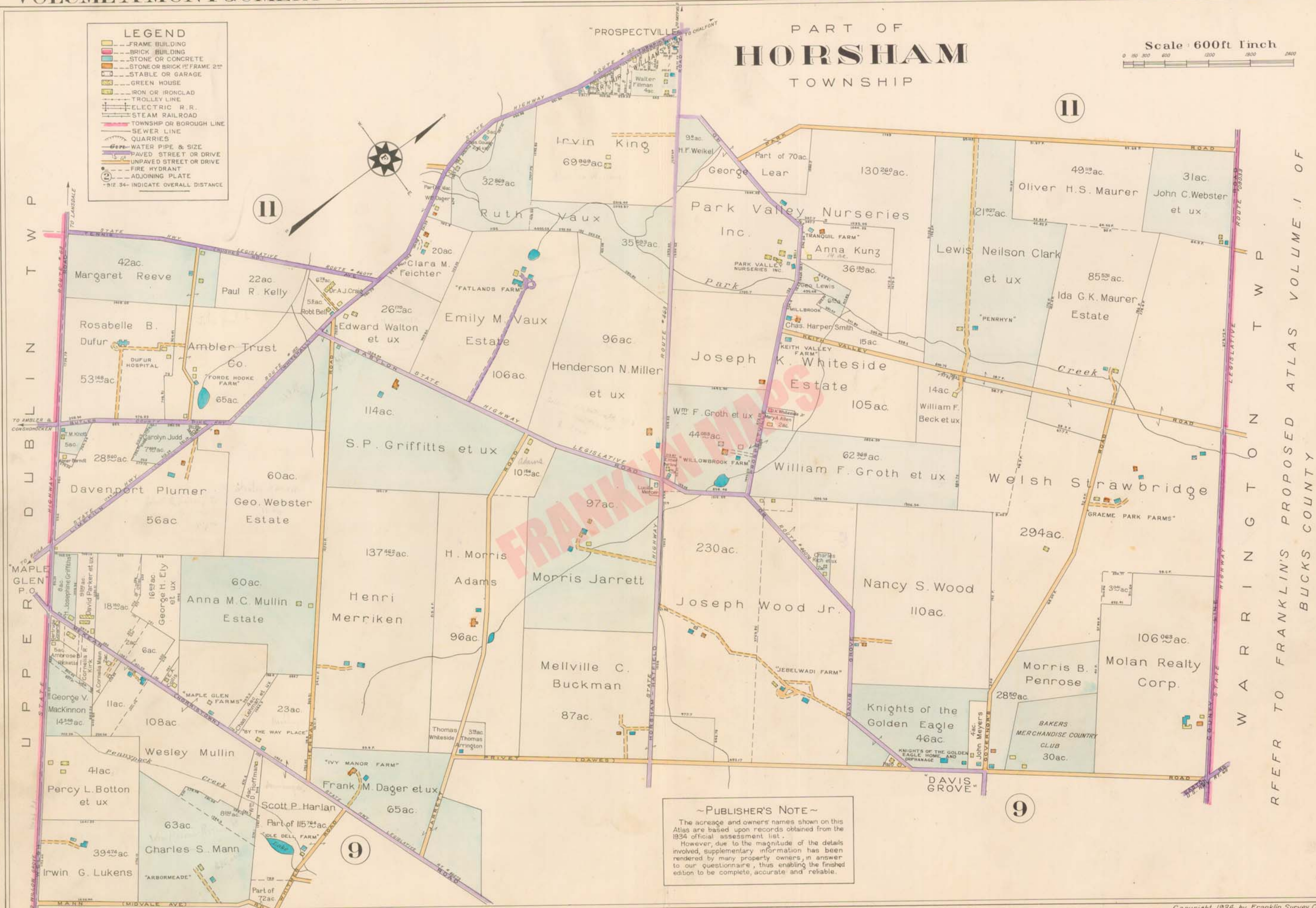
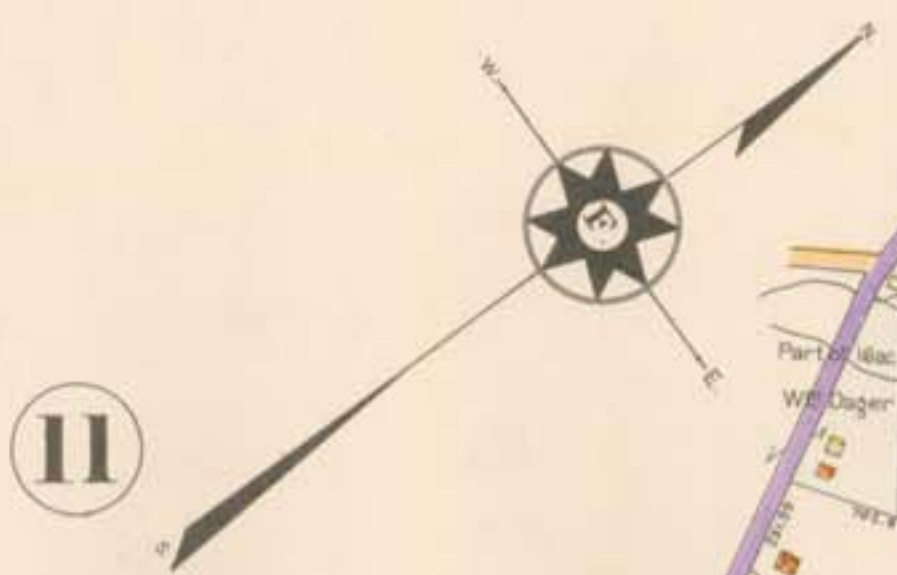


PART OF
HORSHAM
TOWNSHIP

Scale: 600ft. Inch
0 100 200 400 600 800 1000

- LEGEND**
- FRAME BUILDING
 - BRICK BUILDING
 - STONE OR CONCRETE
 - STONE OR BRICK 1/2 FRAME 2nd
 - STABLE OR GARAGE
 - GREEN HOUSE
 - IRON OR IRONCLAD
 - TROLLEY LINE
 - ELECTRIC R. R.
 - STEAM RAILROAD
 - TOWNSHIP OR BOROUGH LINE
 - SEWER LINE
 - QUARRIES
 - WATER PIPE & SIZE
 - PAVED STREET OR DRIVE
 - UNPAVED STREET OR DRIVE
 - FIRE HYDRANT
 - ADJOINING PLATE
 - SIZE 34- INDICATE OVERALL DISTANCE



~PUBLISHER'S NOTE~
 The acreage and owners names shown on this Atlas are based upon records obtained from the 1924 official assessment list.
 However, due to the magnitude of the details involved, supplementary information has been rendered by many property owners, in answer to our questionnaire, thus enabling the finished edition to be complete, accurate and reliable.

REFER TO FRANKLIN'S PROPOSED ATLAS VOLUME I OF
BUCKS COUNTY